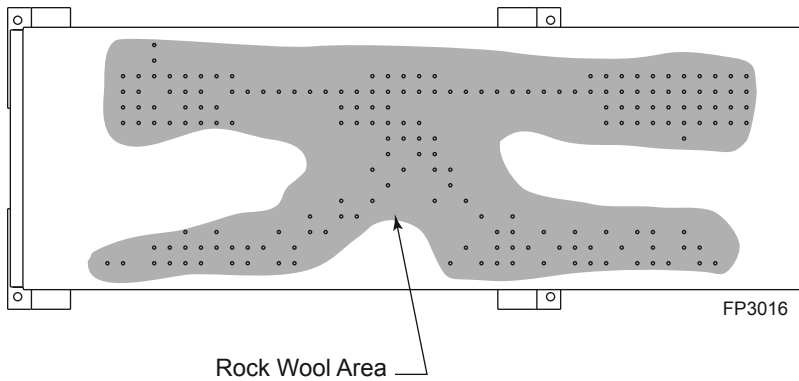


ROCK WOOL PLACEMENT

1. Your fireplace was supplied with three (3) 8-gram bags of rock wool embers: Use one (1) 8 gram bag or rock wool for propane/LP models and up to three (3) bags of rock wool for natural gas models depending on the size of your fireplace.

- 2. For best results in flame appearance and operation, pull the rock wool apart into dime-sized pieces or smaller. Cover the entire ported surface of the burner with one thin layer of rock wool.
- 3. Place the logs on the burner. Refer to the "Log Placement Section". Light the unit and after 15 minutes check burner flame and glow. Adjust embers as necessary to achieve an even and clean flame.



WARNING
 The use of too much rock wool could cause flame to burn poorly and may cause sooting.

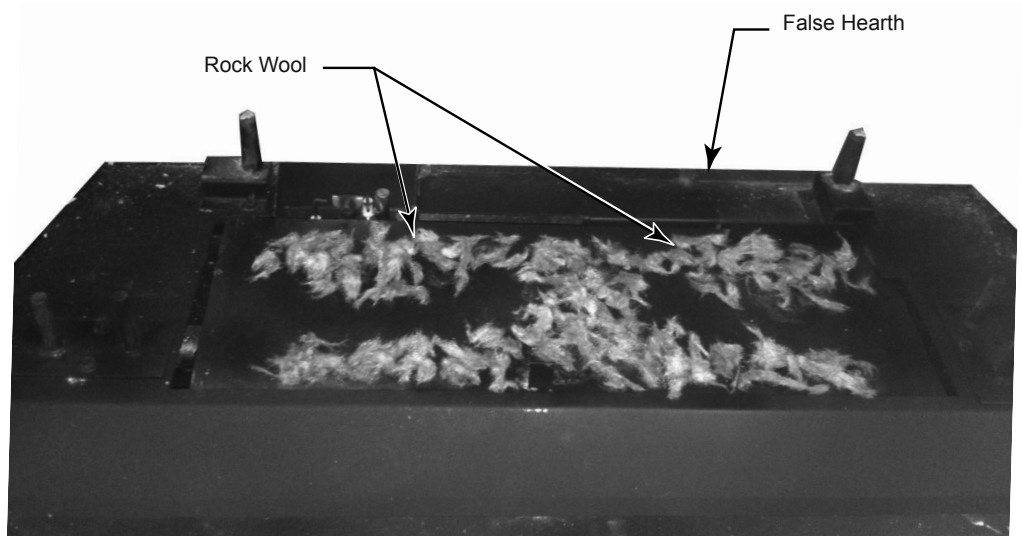


Figure 56 - Placement of Rock Wool on Burner

LG1176

NOTE: An adjustable baffle plate is shipped in the maximum open position secured to the false bottom. The baffle plate may be adjusted to restrict the flame depending on air flow to the burner. Figure 57



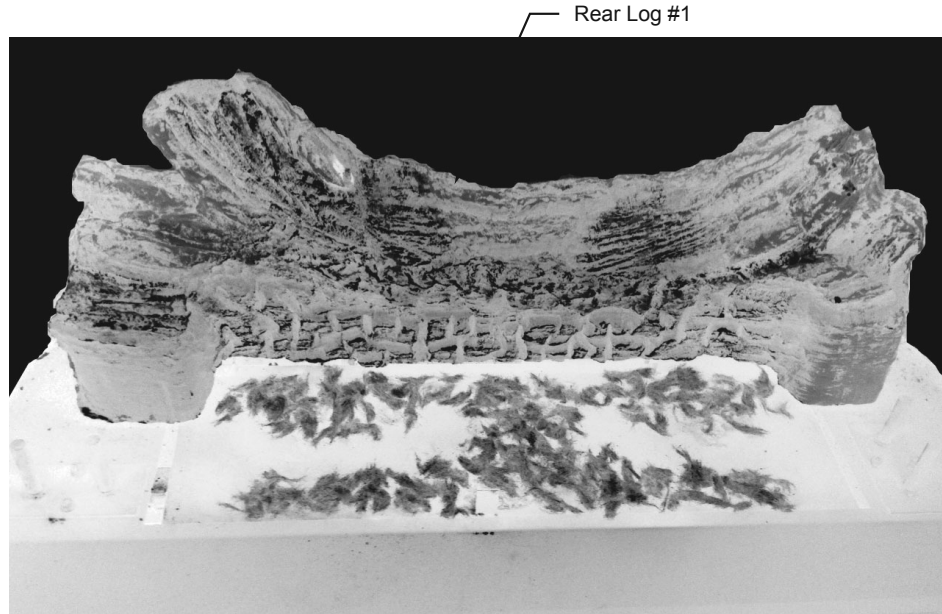
Figure 57 - Flat Baffle

FP3039

LOG PLACEMENT

1. Place rear log (#1) on the two (2) pins on the false hearth in the back of the firebox. The log should rest firmly on the mounting pins. *Figure 58*

Figure 58



Rear Log #1

LG1177

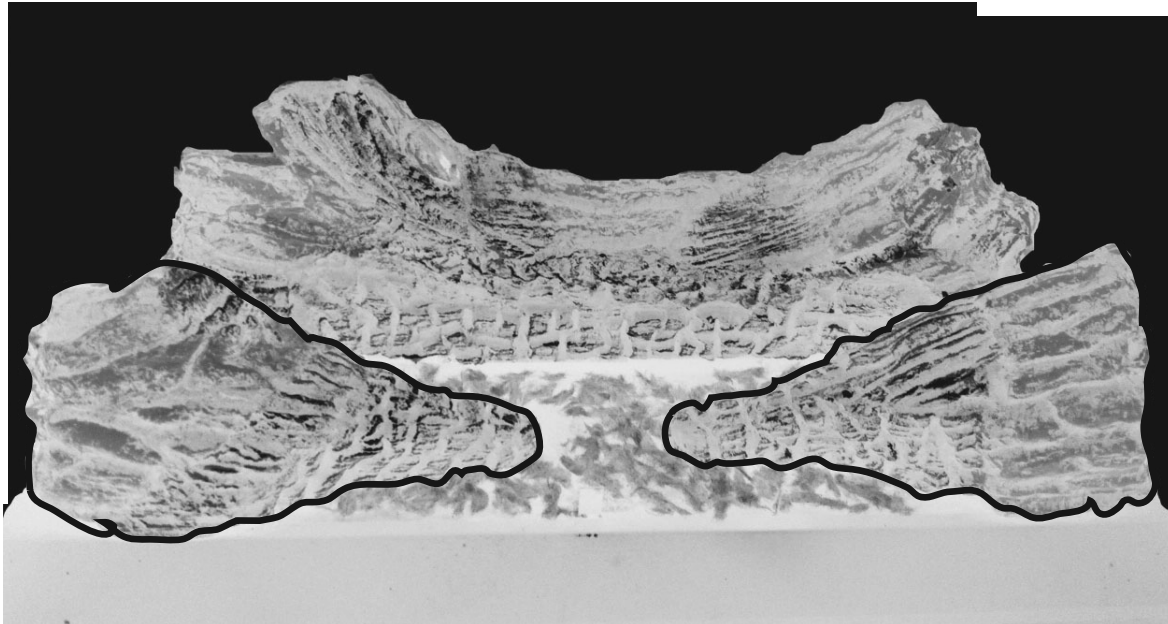


Figure 59

LG1178

2. Place the bottom left and right logs (#2 & #3) on the two (2) pins located on the left and right sides of the false hearth toward the front. *Figure 59*

3. Bend the tab in the center front of the false hearth up to a 90° angle. *Figure 60*. Place the top log (#4) by resting the square notch located on the bottom of the log over the tab mentioned above. Rest the top part of the log on the flat areas of the rear log. *Figure 61*

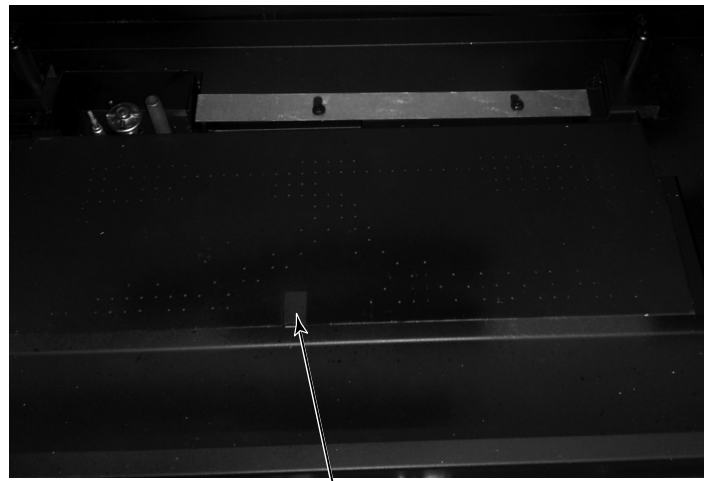


Figure 60

Center Tab

LG1183

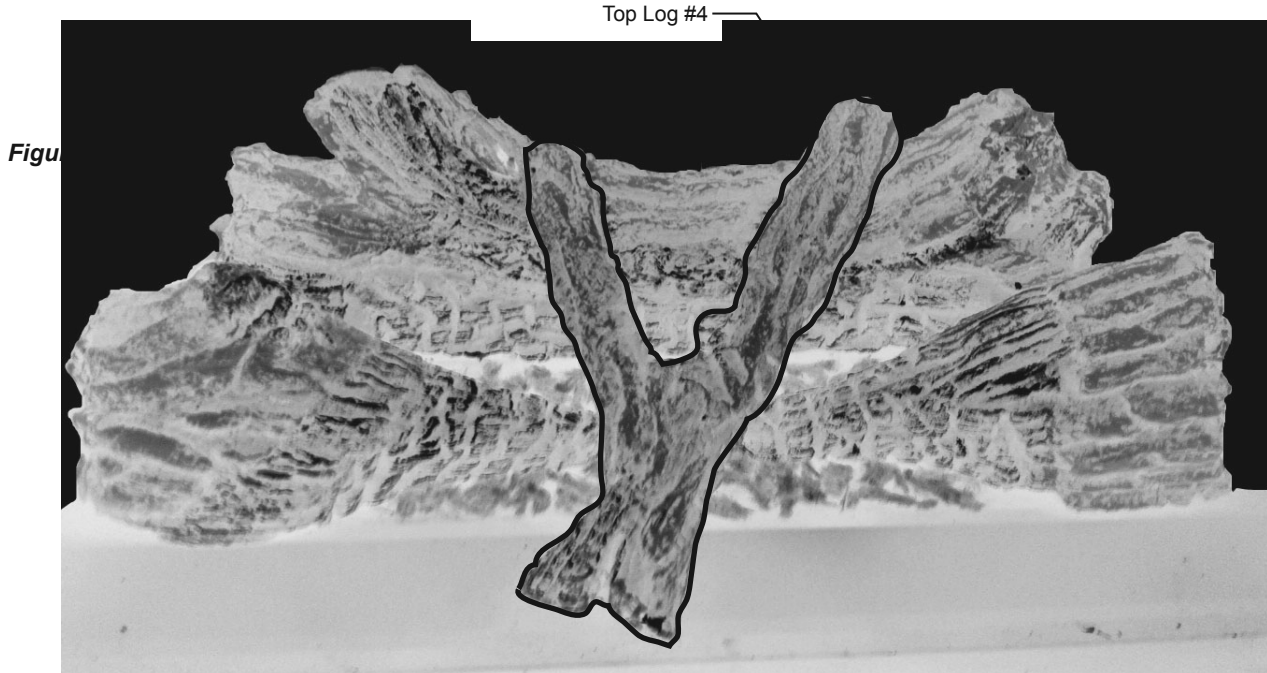


Figure 61

Top Log #4

LG1180

LAVA ROCK AND EMBER PLACEMENT

Sprinkle lava rock on the floor of the inner combustion chamber. Evenly distribute the rock. Do not pile the lava rock up in front of grate. Do not place lava rock on the burner. If desired, purchase optional embers to decorate the floor of the fireplace.

WARNING

Do not sprinkle the lava rock or ember chunks on top of the burner. This may cause potential sooting, glass breakage and a fire hazard